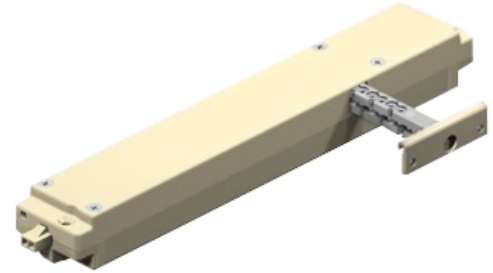


conel operator

// product features

- Electro-mechanical operator for remote window applications
- Can be surface mounted to a sill or concealed under a cover
- 150 mm (6") or 250 mm (10") opening options
- Can be operated from a simple switch (sold separately)
- Optional keypad allows control of up to 4 units and variable opening positions
- A rain sensor can be added to provide automatic window closure

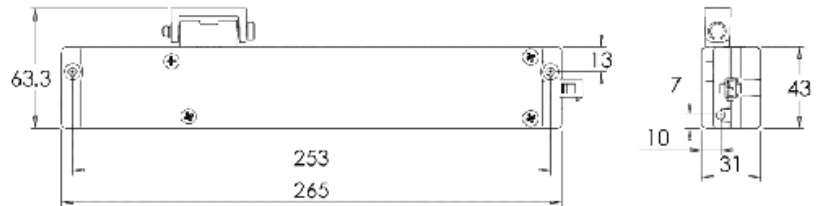


// product specifications

- Standalone can be set to 150 mm (6") or 250 mm (10") opening options
- Keypad controller offers 4 progressive opening positions
- 24VDC input

// materials & finishes

- Operator body is zinc alloy
- Chain is nickel plated zinc alloy with stainless steel links
- Sash bracket is anodized aluminum



Recommended Maximum Sash Heights, Widths and Weights

Application	Open Angle	Maximum Weight (kg)	Minimum Sash Width	Maximum Sash Height	Minimum Sash Height	Maximum Sash Width
Casement	N/A	50	40 mm	900 mm	***	***
Awning	Up to 20°	50	***	***	400 mm	900 mm
	20° to 30°	40	***	***	400 mm	900 mm
	30° to 40°	35	***	***	400 mm	900 mm

For Roof Window applications it is recommended that an Interlock Skylight Operator be used.

Note: Conel Operators are only to be used on windows with non-friction stays or hinges.